



Specification & Pricing



Quick Ship
January 2025

Version date 1/1/2025



Quick Ship

January 2025

Version date 1/1/2025

Welcome

This Product Specification Guide has been formatted for designing with HomeMark Cabinets. It contains information for our products in an easy-to-read format. In keeping with our policy of continuous product refinement, HomeMark Cabinets. reserves the right to change specifications in design and materials as conditions require. If you would like further clarification about any of our products, processes, or have suggestions, please contact Customer Service.

Table of Contents

1	Welcome	21	Utility Cabinets
2	Warranty	22	Tall Cabinets
3	Door Styles, Wood Species & Finish Characteristics	22	Oven Cabinet
3	Door Styles & Door Construction	23	Vanity Cabinets
4	Olmsted, Madison	24	Vanity Sink Base
5	Standard Construction	24	Vanity Sink Base Full Height
5	Nomenclature	24	Vanity Base
6	Construction	24	Vanity Drawer Base
6	Overlay & reveals	24	Combo Vanity Base
7	Frame Dimensions	24	Vanity Specialty
9	Drawer Box & ROT Dimensions	25	Accessories & Parts
11	Wall Cabinets	26	Crown Molding
12	Standard Wall	26	Specialty Molding
13	Wall Refrigerator	27	Fillers
14	Blind Wall Corner Cabinets	27	Panels
14	Wall Angle Corner	28	Base End Panel & Refrigerator End Panels
14	Specialty Wall	28	Drawer Insert Kits
15	Floating Shelves	29	Valences
17	Base Cabinets	29	Corbels & Supports
18	Base Standard	29	Shelves
17	Base Full Height	30	Roll-out Trays
17	Drawer Base	31	Price List
19	Sink Base / Range Base	32	List Prices
19	Farm Sink Base		
19	Base Microwave		
19	Base Specialty		
20	Corner Base Easy Reach & Super Susan		
20	Blind Base		
20	Base Waste Basket		



Consumer Cabinet Five-Year Limited Warranty

HomeMark Cabinets hereby warrants to the original purchaser, for residential applications only, that all cabinets and accessories, hinges and all drawers, including system hardware, are free from defects in materials and workmanship. This warranty begins upon the date of delivery to you and runs for five years. This warranty is expressly limited to repair or replacement of the defective part at the discretion of HomeMark Cabinets, and does not include labor for removal or replacement. This warranty does not extend to defects caused by improper handling, storage, installation, assembly or disassembly, intentional damage, product modifications, exposure to the elements including humidity which may result in warping or splitting, accidental misuse, abuse or negligence. Natural woods may vary in texture, color and wood grain, and exhibit subtle changes as they age. For example, wood joints may eventually have visible cracking around the joint area and cabinet colors may darken or lighten over time. Sunlight, smoke, moisture, household cleaners and other environmental conditions may cause materials to vary from their original color and/or to warp, split or crack. These variations are considered to be the nature of the material in relation to their environmental exposure and are not covered under this warranty.

Additional Limitations and Disclaimers

HomeMark Cabinets makes no other warranties other than those set forth herein and all other warranties are hereby disclaimed. The implied warranties of merchantability and fitness for a particular purpose are limited in duration to the length of the limited warranty period while on the market. The limited warranties set forth herein are limited to the first and original buyer and are not transferrable thereafter. In no event shall HomeMark Cabinets be liable for incidental or consequential damages to the purchaser or to any third party, including, without limitation, damages arising from personal injury, lost profits, loss of business opportunity, loss of property, economic losses, or statutory or exemplary damages, whether from negligence, warranty, strict liability or otherwise. Some states do not allow the exclusion or limitation of incidental or consequential damages, or limitations on how long an implied warranty lasts, so the above limitations and exclusions may not apply to you. This warranty gives you specific legal rights, and you may also have other rights which vary from state to state.

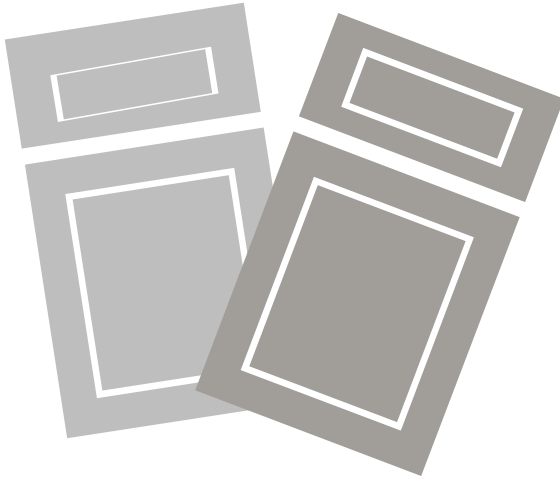
Claims

All claims for defective cabinets and accessories must be submitted to HomeMark Cabinets in writing and must specify the defects present in the cabinets and accessories. After HomeMark Cabinets has had an opportunity to inspect the cabinets and accessories, they will, at their discretion, either replace defective cabinets and accessories or repair any defects in the cabinets and accessories. All claims must be submitted to the following address:

HomeMark Cabinets
Claims Department
4747 Western Avenue
Connersville, Indiana 47331

Door Styles

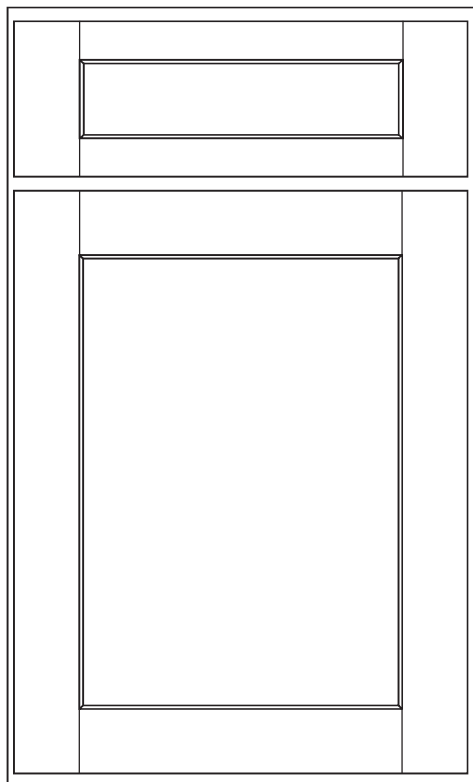
See door style description and drawing for specifications



Discrepancies, errors, and omissions may occur between this Specification Guide, design software, and the web based Quoting Tool. Please consult with Customer Service for final determination of product. HomeMark Cabinets reserves the right to change and alter its product and/or specifications without notification as market conditions require. It is the responsibility of the individual user to update their own Specification Guide and design software. Material dimensions may be nominal based on lumber industry standards.

January 2025

Olmsted - Recessed Panel



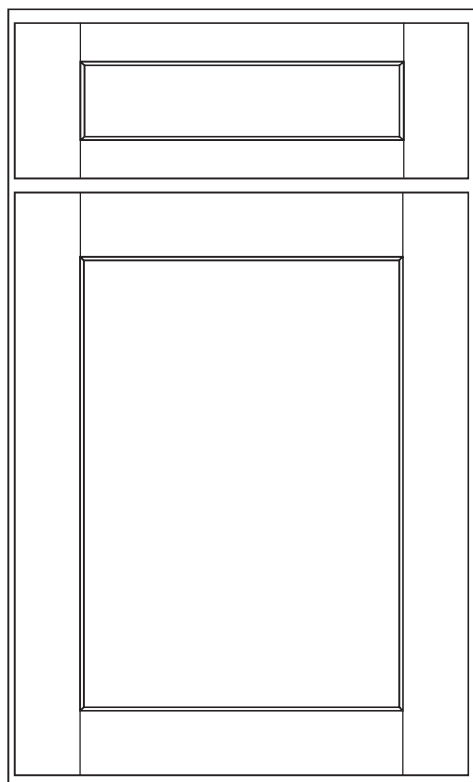
- Full overlay door
- 3/4" solid wood, 2 5/8" wide mortise and tenon door frame
- 1/4" veneered, engineered HDF core center panel
- Standard drawer front is reverse raised panel, 5-piece, 5/8" solid hardwood center drawer front
- Decorative hardware required

FINISHES:

- Cloud

*Olmsted is available Assembled or Flat Packed
Not all SKU are available to ship Flat Packed
See Price List for price and availability*

Madison - Recessed Panel



- Full overlay door
- 3/4" solid wood, 2 3/4" wide mortise and tenon door frame
- 1/4" veneered, engineered HDF core center panel
- Standard drawer front is reverse raised panel, 5-piece, 5/8" veneered, engineered HDF core center panel
- Decorative hardware required

FINISHES:

- Harvest
- Fossil

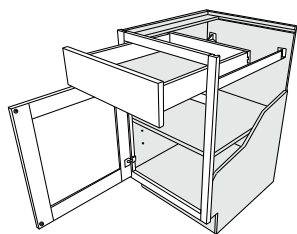
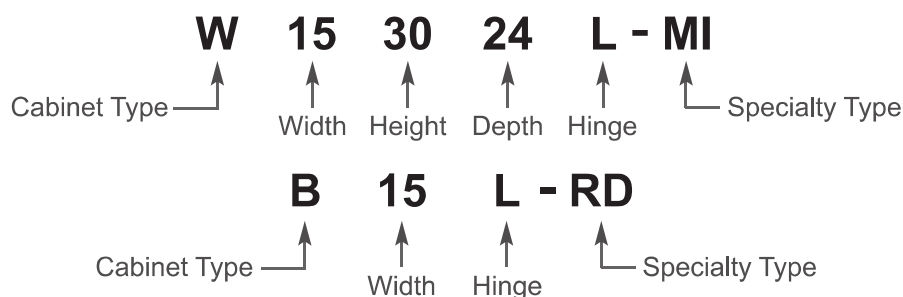
*Madison is available Assembled or Flat Packed
Not all SKU are available to ship Flat Packed
See Price List for price and availability*

Standard Construction

Nomenclature, Door Styles & Standard Construction

If depth and height are not listed in nomenclature, refer below for dimensions.

- Wall Cabinets: 12" depth (not including door/bumper)
- Base Cabinets: 34 1/2" height
- Base Cabinets: 24" depth (not including door/bumper)
- Utility Cabinets: 24" depth (not including door/bumper)
- Vanity and Desk Base Cabinets: 21" depth (not including door/bumper)



STANDARD ALL PLYWOOD BOX CONSTRUCTION

- Sides, tops, bottoms, toekick and I-beams are constructed of 1/2" thick, 7-ply plywood with faux natural birch Melamine interior
- Cabinet back panels are constructed of 1/2" thick, 7-ply plywood with a faux natural birch melamine interior
- Cabinet drawer box bottom panels are constructed of 3/8" thick, 3-ply plywood with a faux natural birch melamine interior
- Cabinet shelves are constructed of 3/4" thick, 9-ply plywood and arch faux natural birch melamine front, top and bottom
- All thicknesses have a Grade K veneer core. Grade K is the second highest veneer core grade (J, K, L and M) that specifies the faces of the plywood have nonirnal surface anomalies so that none telegraph through to the finished surfaces.
- All painted cabinets will have solid wood door frames with a center panel made of 47 lb/ft', furniture-grade, medium-density fiberboard (HDF) to minimize future cracking of paint.

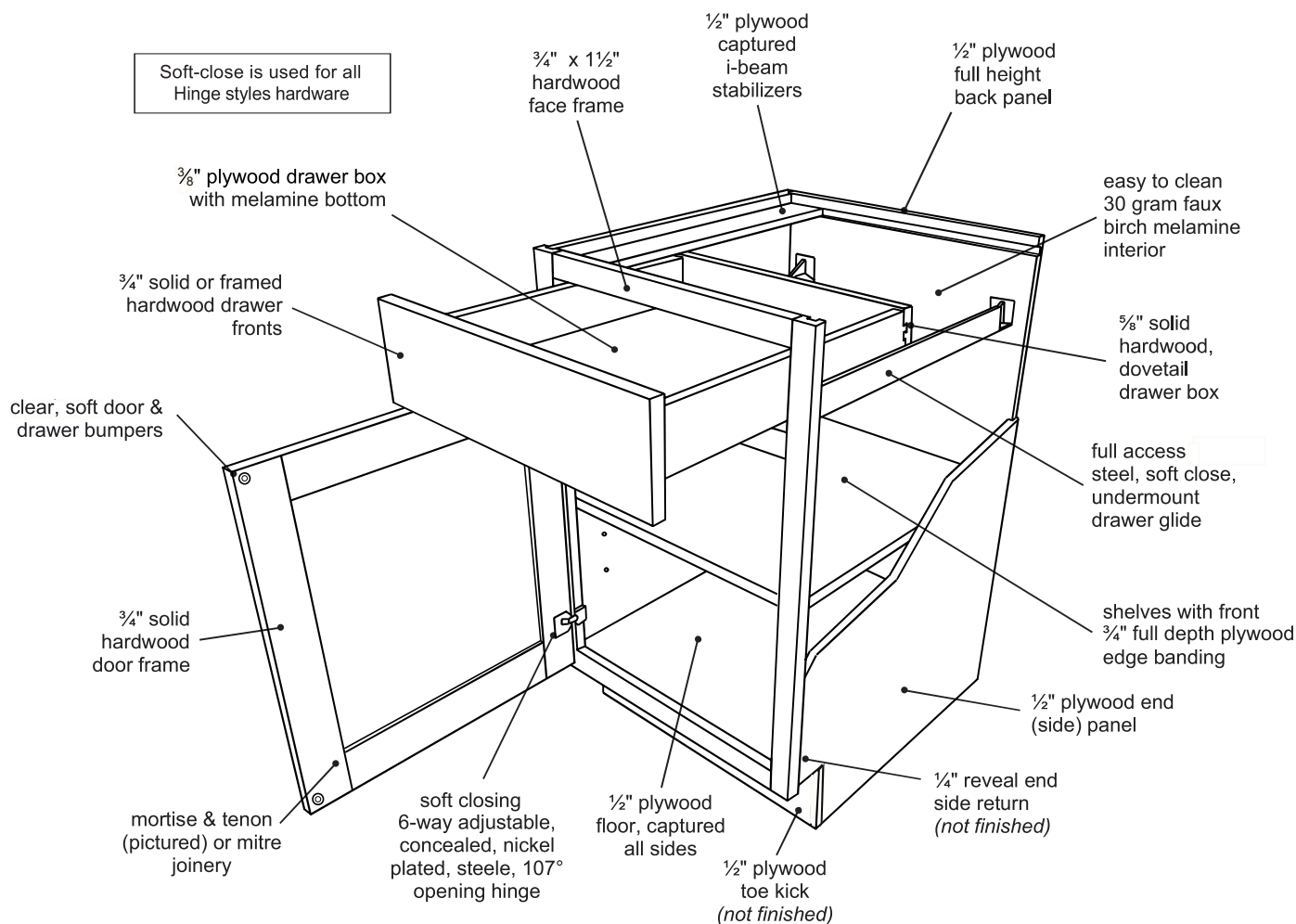


HomeMark Cabinets carries the ANSI/KCMA 161.1 certification seal. Our cabinets have been extensively tested according to rigorous standards developed and periodically revised, by a committee operating under rules set by the American National Standards Institute (ANSI) and developed by the Kitchen Cabinet Manufacturers Association (KCMA). <https://www.kcma.org/certifications/ansi-kcma-certification>

Cabinetry products are 100% compliant with CARB Phase 1 and CARB Phase 2 defined guidelines of composite wood products by the California Air Resources Board. <https://arb.ca.gov/toxics/compwood/compwood.htm>

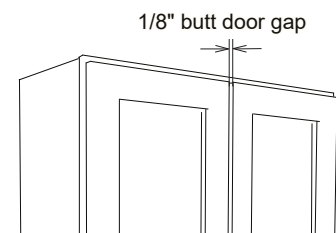
Standard Cabinet Construction

Wall, Base, and Utility are constructed using high quality materials and hardware. The illustration below identifies the components of a standard Base cabinet. Wall and Utility cabinets have similar construction with unfinished, 1/2" plywood top and bottom.



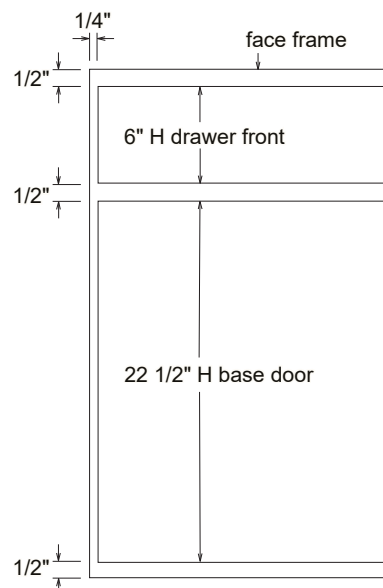
Standard Full Overlay Construction

Full Overlay (FOL) doors are sized to cover the majority of the face frame. FOL has concealed hinges that may require periodic adjustments. Gapping between doors and drawer fronts will need to be adjusted after final installation.



Construction note:

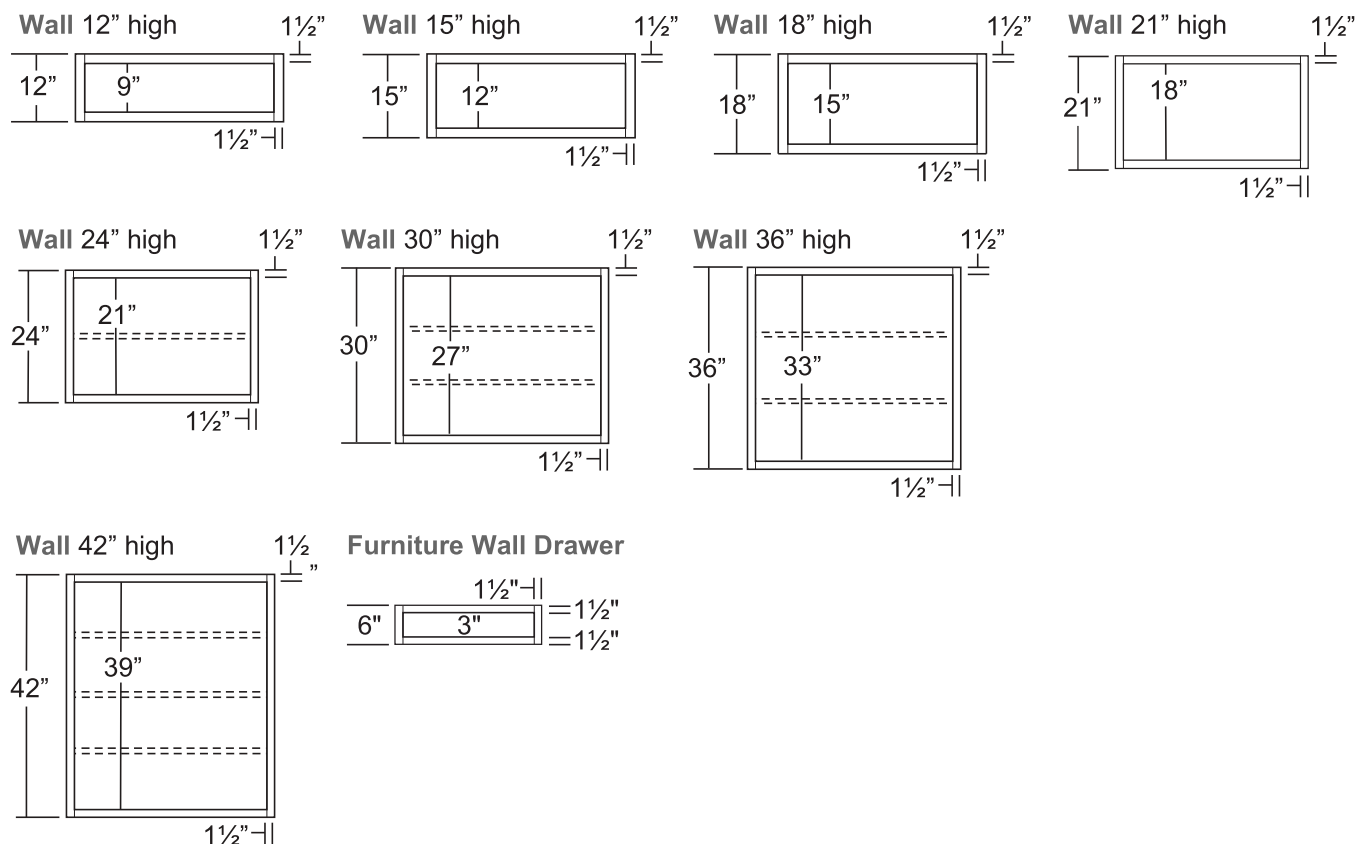
Measurement tolerance specifications require dimensions (width, height, depth gap or reveal), to be within 1/16". Material dimensions may be nominal based on lumber industry standards



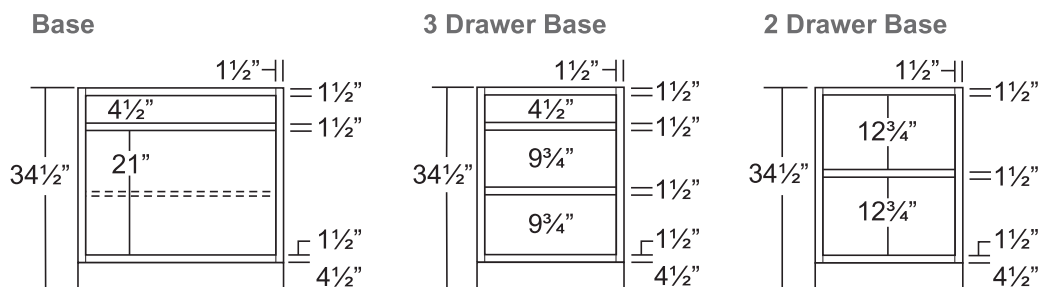
Standard Cabinet Frame Dimensions

Illustrations specify dimensions of vertical stiles and horizontal rails, toe kick, cabinet height, and standard interior openings for wall, base, utility and vanity cabinets.

Wall Cabinets



Base and Vanity Cabinets



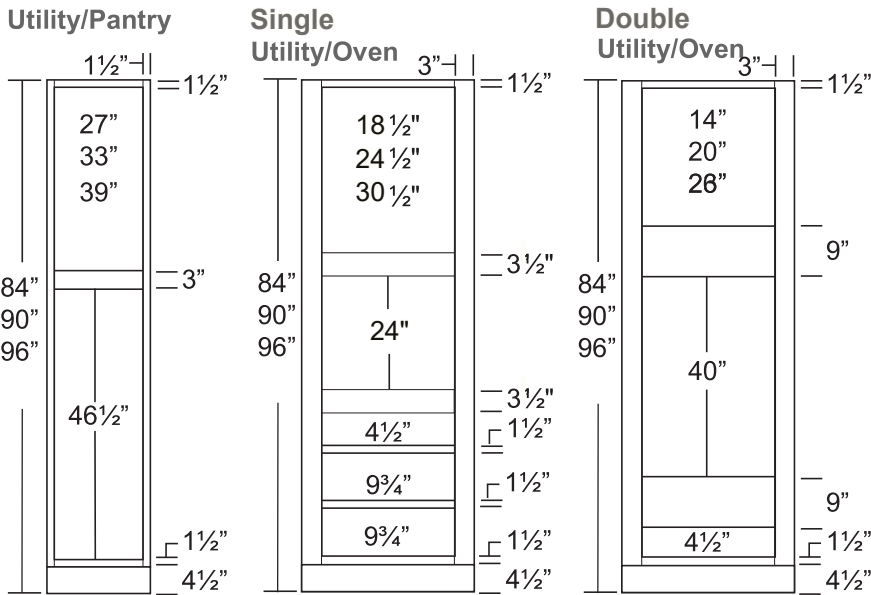
Standard Interior Cabinet Dimensions

Cabinet Front Width	Cabinet Interior Width	Cabinet Front Width	Cabinet Interior Width	Cabinet Depth	Cabinet Interior Depth
9"	7 1/2"	24"	22 1/2"	12"	10 7/8"
12"	10 1/2"	27"	25 1/2"	15"	13 7/8"
15"	13 1/2"	30"	28 1/2"	21"	19 7/8"
18"	16 1/2"	33"	31 1/2"	24"	22 7/8"
21"	19 1/2"	36"	34 1/2"		
		39"	37 1/2"		
		42"	40 1/2"		

Standard Cabinet Frame Dimensions

Illustrations specify dimensions of vertical stiles and horizontal rails, toe kick, cabinet height, and standard interior openings for wall, base, utility and vanity cabinets.

Utility Cabinets



Drawer Box & ROT Dimensions

Dimensions are nominal and only provided as a reference. Discrepancies, error, and omissions may be present. Products may be changed, modified and discontinued without notification

Drawer Box & Roll Out Tray

Drawer Box | 24" deep cabinet (Subtract 3" for Vanity Cabinets)

Exterior	Width	Length	Height	Interior	Width	Length	Height
B12	8-1/2"	21"	3-5/8"	B12	7-1/4"	19-5/8"	2-7/8"
B15	11-1/2"	21"	3-5/8"	B15	10-1/4"	19-5/8"	2-7/8"
B18	14-1/2"	21"	3-5/8"	B18	13-1/4"	19-5/8"	2-7/8"
B21	17-1/2"	21"	3-5/8"	B21	16-1/4"	19-5/8"	2-7/8"
B24	20-1/2"	21"	3-5/8"	B24	19-1/4"	19-5/8"	2-7/8"
B27	23-1/2"	21"	3-5/8"	B27	22-1/4"	19-5/8"	2-7/8"
B30	26-1/2"	21"	3-5/8"	B30	25-1/4"	19-5/8"	2-7/8"
B33	29-1/2"	21"	3-5/8"	B33	28-1/4"	19-5/8"	2-7/8"
B36	32-1/2"	21"	3-5/8"	B36	31-1/4"	19-5/8"	2-7/8"
B39	16"	21"	3-5/8"	B39	14-3/4"	19-5/8"	2-7/8"

■ B39 and B42 have 2 drawers; For B42, see B21 draawer box and roll out tray dimensions

'Deep' Drawer Box | 24" Cabinet (Subtract 3" for Vanity Cabinets)

Exterior	Width	Length	Height	Interior	Width	Length	Height
B12	8-1/2"	21"	8"	B12	7-1/4"	19-5/8"	7-1/4"
B15	11-1/2"	21"	8"	B15	10-1/4"	19-5/8"	7-1/4"
B18	14-1/2"	21"	8"	B18	13-1/4"	19-5/8"	7-1/4"
B21	17-1/2"	21"	8"	B21	16-1/4"	19-5/8"	7-1/4"
B24	20-1/2"	21"	8"	B24	19-1/4"	19-5/8"	7-1/4"
B27	23-1/2"	21"	8"	B27	22-1/4"	19-5/8"	7-1/4"
B30	26-1/2"	21"	8"	B30	25-1/4"	19-5/8"	7-1/4"
B33	29-1/2"	21"	8"	B33	28-1/4"	19-5/8"	7-1/4"
B36	32-1/2"	21"	8"	B36	31-1/4"	19-5/8"	7-1/4"
B39	16"	21"	8"	B39	14-3/4"	19-5/8"	7-1/4"

■ B39 and B42 have 2 drawers; For B42, see B21 draawer box and roll out tray dimensions

Furniture Drawer Box

Exterior	Width	Length	Height	Interior	Width	Length	Height
FWD1506	10-15/16"	9-1/2"	2-5/8"	FWD1506	9-5/8"	8-1/4"	2"
FWD1806	13-15/16"	9-1/2"	2-5/8"	FWD1806	12-5/8"	8-1/4"	2"
FWD2106	16-15/16"	9-1/2"	2-5/8"	FWD2106	15-5/8"	8-1/4"	2"
FWD2406	19-15/16"	9-1/2"	2-5/8"	FWD2406	18-5/8"	8-1/4"	2"

Cabinet Shelf Weight Capacity

Cabinet shelf weight capacity is rated at the industry standard of 15 lbs. per square foot of shelf or cabinet bottom when cabinet is mounted independently to wall. Installation of cabinets to adjacent cabinets, side wall, or ceiling will provide more capacity.

This image shows a single sheet of white paper with horizontal ruling lines. The lines are evenly spaced and run across the width of the page. There are no margins, text, or other markings on the paper.

Wall Cabinets

Wall Construction

Design Notes:

Standard wall cabinet box depth is 12" unless otherwise stated. This depth does not include the thickness of the doors, drawer fronts, and bumpers.

Standard cabinet construction includes a natural, unfinished plywood side unless otherwise stated. Matching finished wall end panles (skins) are available for field installation (see accessories).

Caution:

Installation of wall cabinets 30" wide or wider and/or 15" deep or deeper requires additional support such as attachment to ceiling, soffit, or support from below. Failure to provide additional support may result in collapse of the cabinet, serious personal injury and/or property damage. Damage relating to installation failure is not covered by warranty.

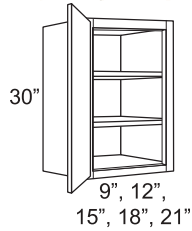
Wall Cabinet Construction Legend:

Cabinet Nomenclature				
W	18	30	24	R
cabinet type	width	height	depth	hinge

Wall Cabinet

30" high, 1 door

12", 15" (15" deep NA Flat Pack)



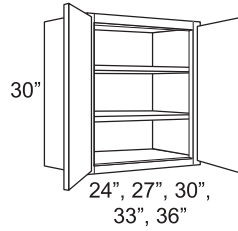
- 2 adjustable shelves

W930	W93015
W1230	W123015
W1530	W153015
W1830	W183015
W2130	W213015

Wall Cabinet

30" high, 2 doors

12", 15" (15" deep NA Flat Pack)



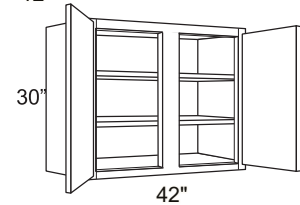
- 2 adjustable shelves
- BUTT door cabinet

W2430	W243015
W2730	W273015
W3030	W303015
W3330	W333015
W3630	W363015

Wall Cabinet

30" high, 2 doors

12"

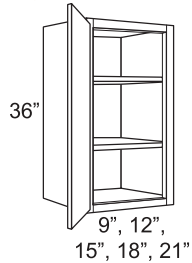


- 2 adjustable shelves
- (3" center stile) gap between doors is 1/2"

W4230**Wall Cabinet**

36" high, 1 door

12", 15" (15" deep NA Flat Pack)



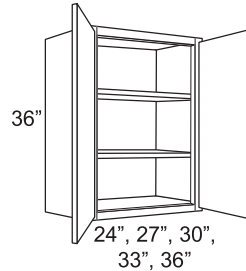
- 2 adjustable shelves

W936	W93615
W1236	W123615
W1536	W153615
W1836	W183615
W2136	W213615

Wall Cabinet

36" high, 2 doors

12", 15" (15" deep NA Flat Pack)



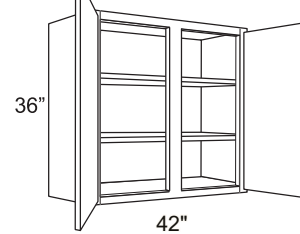
- 2 adjustable shelves
- BUTT door cabinet

W2436	W243615
W2736	W273615
W3036	W303615
W3336	W333615
W3636	W363615

Wall Cabinet

36" high, 2 doors

12"

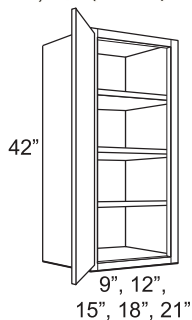


- 2 adjustable shelves
- (3" center stile) gap between doors is 1/2"

W4236**Wall Cabinet**

42" high, 1 door

12", 15" (15" deep NA Flat Pack)



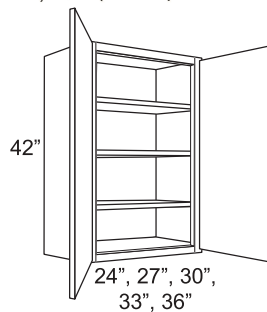
- 3 adjustable shelves

W942	W94215
W1242	W124215
W1542	W154215
W1842	W184215
W2142	W214215

Wall Cabinet

42" high, 2 doors

12", 15" (15" deep NA Flat Pack)



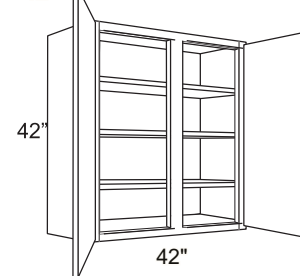
- 3 adjustable shelves
- BUTT door cabinet

W2442	W244215
W2742	W274215
W3042	W304215
W3342	W334215
W3642	W364215

Wall Cabinet

42" high, 2 doors

12"

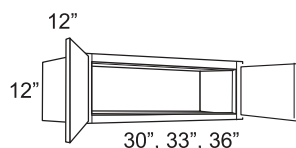


- 3 adjustable shelves
- (3" center stile) gap between doors is 1/2"

W4242

Wall Cabinet

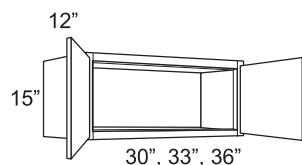
12" high, 2 doors



- No shelf
- BUTT door cabinet

W3012**W3312****W3612****Wall Cabinet**

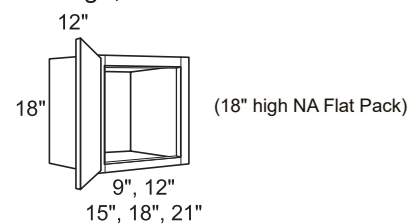
15" high, 2 doors



- No shelf
- BUTT door cabinet

W3015**W3315****W3615****Wall Cabinet**

18" high, 1 door

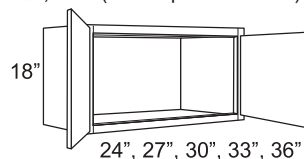


- No shelf
- Single door cabinet

W918**W1218****W1518****W1818****W2128****Wall Cabinet**

18" high, 2 doors

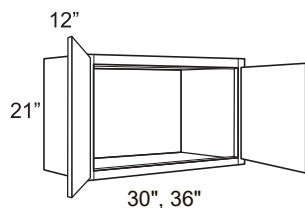
12", 15" (15" deep NA Flat Pack)



- No shelf
- BUTT door cabinet

W2418**W301815****W2718****W361815****W3018****W3318****W3618****Wall Cabinet**

21" high, 2 doors

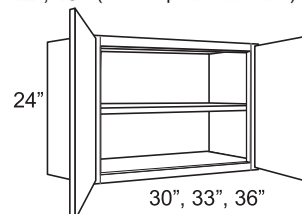


- No shelf
- BUTT door cabinet

W3021**W3621****Wall Cabinet**

24" high, 2 doors

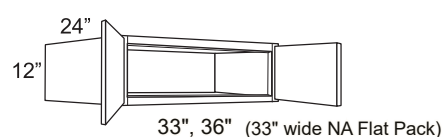
12", 15" (15" deep NA Flat Pack)



- One adjustable shelf
- BUTT door cabinet

W3024**W302415****W3324****W362415****W3624****Wall Refrigerator Cabinet**

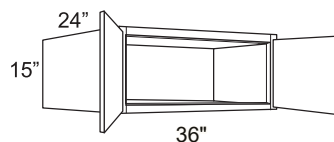
12" high, 24" deep, 2 doors



- No shelf
- 24" deep cabinet requires 3 points of attachment for proper installation
- BUTT door cabinet

WR331224**WR361224****Wall Refrigerator Cabinet**

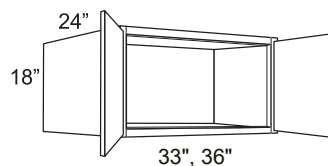
15" high, 24" deep, 2 doors



- No shelf
- 24" deep cabinet requires 3 points of attachment for proper installation
- BUTT door cabinet

WR361524**Wall Refrigerator Cabinet**

18" high, 24" deep, 2 doors

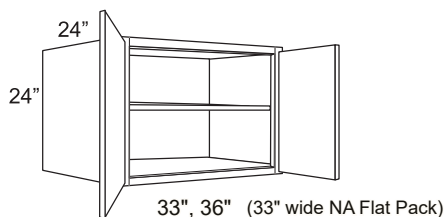


- No shelf
- 24" deep cabinet requires 3 points of attachment for proper installation
- BUTT door cabinet

WR331824**WR361824**

Wall Refrigerator Cabinet

24" high, 24" deep, 2 doors

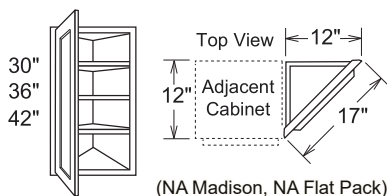


- One full depth shelf
- 24" deep cabinet requires 3 points of attachment for proper installation
- BUTT door cabinet

WR332424
WR362424

Wall End Angle Cabinet

1 door

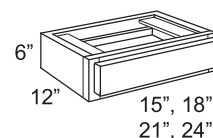


- 30/36" high - 2 adjustable shelves
- 39/42" high - 3 adjustable shelves
- W15 door used (12" wide opening)
- Soft Close door option not available

WEA1230
WEA1236
WEA1242

Wall Furniture Drawer

1 drawer box

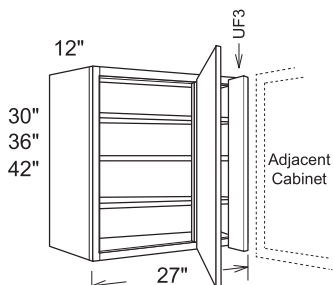


- Framed construction allows for stacking
- Full extension side-mounted drawer glides
- Soft-Close drawer glides **are not** available
- Drawer front 5½" high

FWD1506
FWD1806
FWD2106
FWD2406

Blind Wall Corner Cabinet

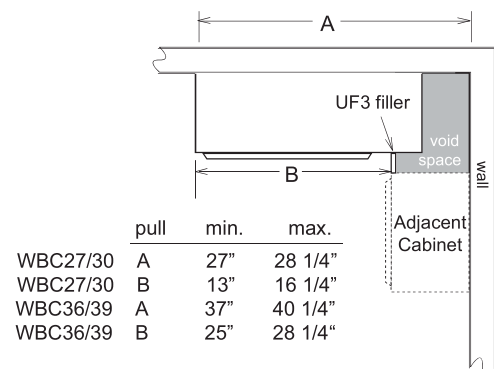
1 door



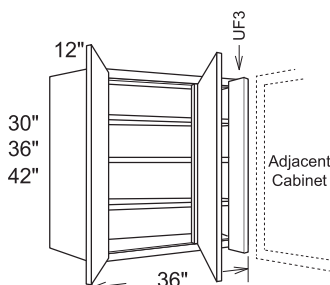
- 30/36" high - 2 adjustable shelves
- 39/42" high - 3 adjustable shelves
- W12 door used (9" wide opening)
- 6" middle stile (1¾" reveal for FOL door to operate properly)
- Blanking panel installed on non-door side
- L/R refers to blind side left or right

WBC27/3030-L
WBC27/3030-R
WBC27/3036-L
WBC27/3036-R
WBC27/3042-L
WBC27/3042-R

Note:
UF3 filler included for inside return installation of adjacent cabinet

Design Note:**Blind Wall Corner Cabinet**

2 doors



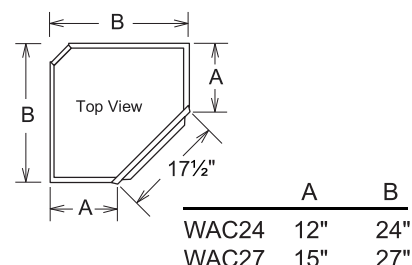
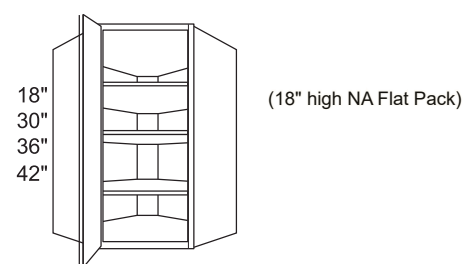
- 30/36" high - 2 adjustable shelves
- 39/42" high - 3 adjustable shelves
- W24 doors used (21" wide opening)
- 6" middle stile (1¾" reveal for FOL door to operate properly)
- Blanking panel installed on non-door side
- BUTT door cabinet
- L/R refers to blind side left or right

WBC36/3930-L
WBC36/3930-R
WBC36/3936-L
WBC36/3936-R
WBC36/3942-L
WBC36/3942-R

Note:
UF3 filler included for inside return installation of adjacent cabinet

Wall Angle Corner Cabinet

1 door



- 30/36" high - 2 adjustable shelves
- 39/42" high - 3 adjustable shelves
- 27" deep cabinet requires 3 points of attachment for proper installation
- W15 door used (12" wide opening)

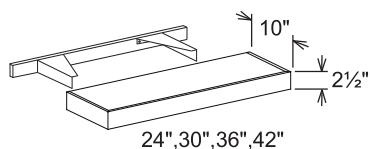
WAC2418 **WAC2736**
WAC2430 **WAC2742**
WAC2436
WAC2442

Design Note:

To ensure proper door function, cabinets or other design elements deeper than 12" should not be placed on either side of the Wall Angle Corner cabinet. If the Wall Angle Corner cabinet is deeper than the adjacent cabinets, fillers are recommended for placement left and right of the Wall Angle Corner to ensure proper door operation on standard depth wall cabinets. Cabinet sides should have Wall End Panels (WEP) applied for this application to flush cabinet sides.

Floating Shelf

Specialty Wall



- 3/4" solid hardwood front/left/right profile
- 3/8" MFD center core top & bottom with matching hardwood veneer exterior
- Floating shelf frame includes metal cantilever brackets, 1/2" plywood wall mounting strip and related fasteners. Mounting system is fully concealed once installed.
- Trimmable in depth to 2" (brackets may have to be trimmed)

FLS24 holds maximum 30 lbs.

FLS30 holds maximum 37 lbs.

FLS36 holds maximum 45 lbs.

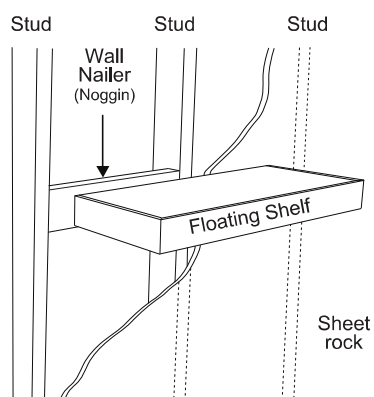
FLS42 holds maximum 52 lbs.

Design Note:

Notes:

- Professional installation recommended
- Wall studs location need to be located for specific design shelf placement.
- Interior wall nailer (noggin) may need to be installed between studs to accommodate precise left/right design placement and required mounting strip and metal bracket placement when standard studs can't accommodate design.

When installing Floating Shelves the metal cantilever brackets must be attached to a wall stud or nailer (noggin) brace.



Notes

This image shows a single sheet of white paper with horizontal ruling lines. The lines are evenly spaced and run across the width of the page. There are no margins, text, or other markings on the paper.

Base Cabinets

Base Construction

Design Notes:

Standard base cabinet box depth is 24" unless otherwise stated. This depth does not include the thickness of the doors, drawer fronts, and bumpers.

Standard cabinet construction includes a natural, unfinished plywood side unless otherwise stated. Matching finished wall end panles (skins) are available for field installation (see accessories).

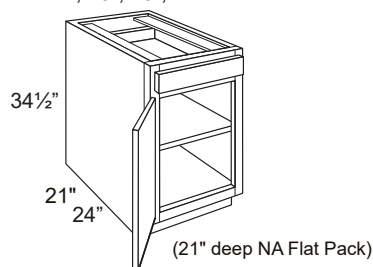
Base Cabinet Construction Legend:

Cabinet Nomenclature			
B	30	RD	L
cabinet type	width	option	hinge

Base

1 drawer box, 1 door

12", 15", 18", 21"



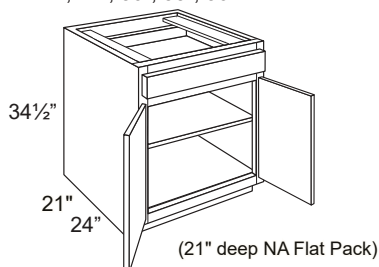
- 1 full depth adjustable shelf

B12 **B12-RD21**
B15 **B15-RD21**
B18 **B18-RD21**
B21 **B21-RD21**

Base

1 drawer box, 2 door

24", 27", 30", 33", 36"



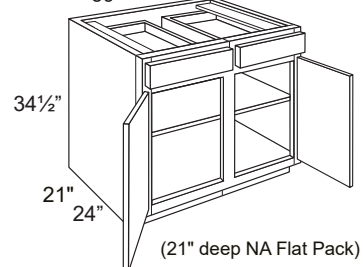
- 1 full depth adjustable shelf
- BUTT door cabinet

B24 **B24-RD21**
B27 **B27-RD21**
B30 **B30-RD21**
B33 **B33-RD21**
B36 **B36-RD21**

Base

2 drawer boxes, 2 door

39" 42"



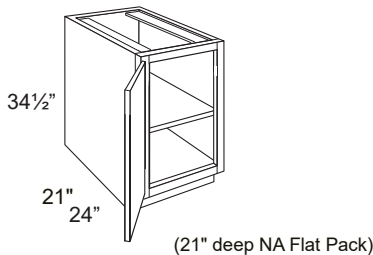
- 1 full depth adjustable shelf (3" center stile) gap between doors is 1/2"
- 2 separate drawer boxes

B39 **B39-RD21**
B42 **B42-RD21**

Base Full Height

1 door

9", 12", 15", 18", 21"



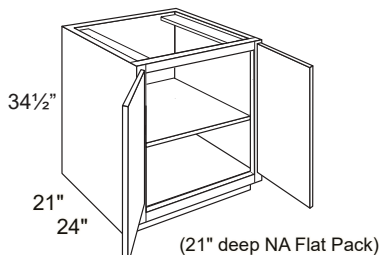
- No drawer box
- 1 full depth adjustable shelf

B9-FH **B12-FH-RD21**
B12-FH **B15-FH-RD21**
B15-FH **B18-FH-RD21**
B18-FH **B21-FH-RD21**
B21-FH

Base Full Height

2 door

24", 27", 30", 33", 36"



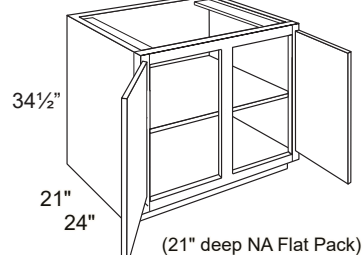
- No drawer box
- 1 full depth adjustable shelf
- BUTT door cabinet

B24-FH **B24-FH-RD21**
B27-FH **B27-FH-RD21**
B30-FH **B30-FH-RD21**
B33-FH **B33-FH-RD21**
B36-FH **B36-FH-RD21**

Base Full Height

2 door

39" 42"

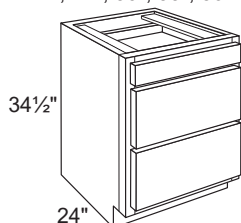


- No drawer box
- 1 full depth adjustable shelf (3" center stile) gap between doors is 1/2"

B39-FH **B39-FH-RD21**
B42-FH **B42-FH-RD21**

Drawer Base

3 drawers

12", 15", 18", 21"
24", 27", 30", 33", 36"

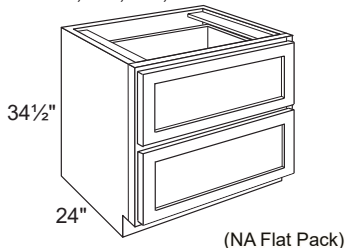
- 1 standard drawer
- 2 deep drawer
- Recessed door styles have 1/2" solid wood center panels

DB12 **DB24**
DB15 **DB27**
DB18 **DB30**
DB21 **DB36**

Drawer Base

2 drawer

15", 30", 33", 36"

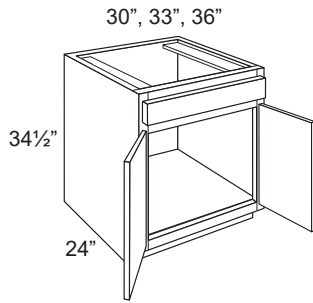


- 2 deep drawers
- 5 piece drawer fronts
- Recessed door styles will have 1/2" solid wood center panels

DB15-2
DB30-2
DB33-2
DB36-2

Sink/Range Base

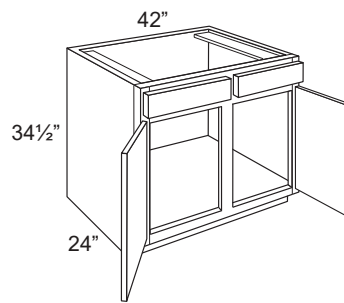
2 doors



- No shelf & no drawer box
- Drawer front is removable
- BUTT door cabinet

SB30**SB33****SB36****Sink/Range Base**

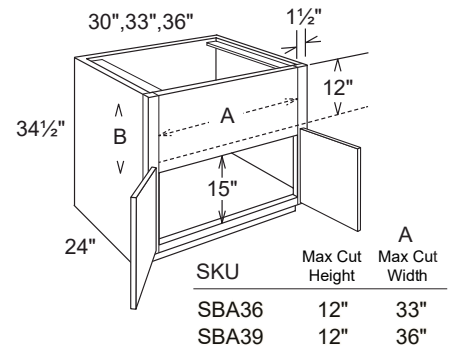
2 doors



- No shelf & no drawer box
- Drawer fronts removable from frame
(3" center stile) gap between doors is 1/2"

SB42**Sink Base Apron**

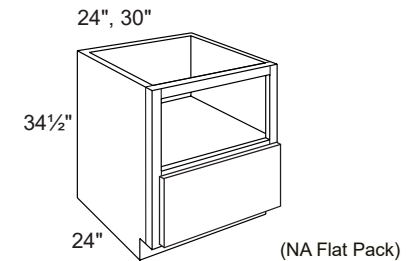
2 Doors



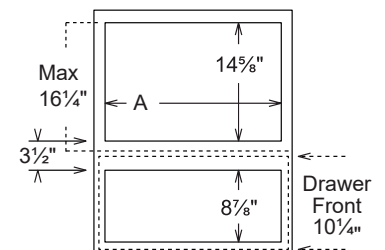
- Solid hardwood face frame made of multiple stiles and rails & no shelf
- Cabinet stile width 1 1/2" & narrow i-beams
- Does not include cradle. Field assembly and modifications will be necessary. May not accommodate all sinks. Check manufacturer specifications before purchase.
- Recommend sink base 2 1/2" wider than sink
- Uses 18" high BUTT doors for cabinet

SBA36**SBA39****Base Microwave**

Built-in | 1 drawer



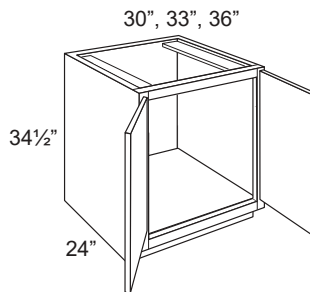
- Designed use with built-in microwaves, microwaves with trim kits and drawer microwaves units
- 1 Deep drawer box
- Recessed door styles have 1/2" solid wood center panels matching faux melamine interior

BM24-BI**BM30-BI****BI Frame Opening**

SKU	A Actual Width	Max Width
BM24-BI	21"	22 1/2"
BM30-BI	27"	28 1/2"

Sink/Range Base

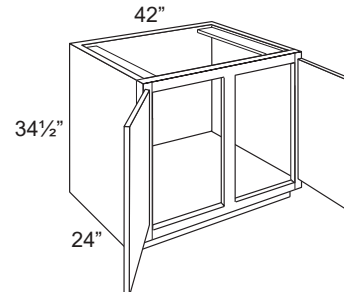
2 doors



- No shelf
- No drawer box
- BUTT door cabinet

SB30-FH**SB33-FH****SB36-FH****Sink/Range Base**

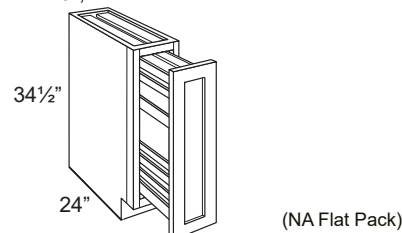
2 doors



- No shelf
- No drawer box
- (3" center stile) gap between doors is 1/2"

SB42-FH**Base Storage Pull Out Organizer**

9", 12"

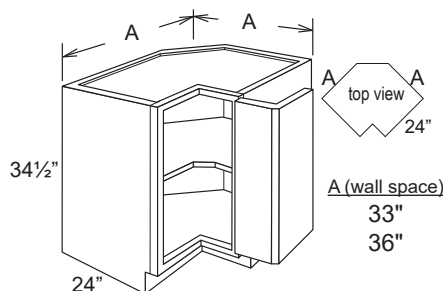


- Cabinet with face mount door (drilled hinges)
- Standard 9" wide full height door
- 3 adjustable shelves
- Heavy duty, steel, ball bearing, side mounted, full extension, soft-close glides

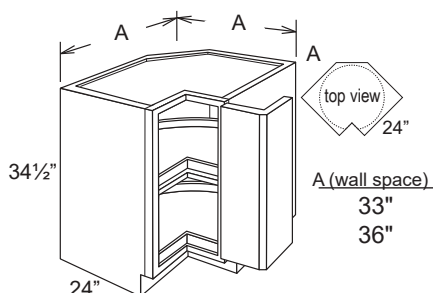
BSPO9

Corner Base

Easy Reach



- 1 full depth adjustable shelf
- Doors open 170°
- FOL Cabinet opening width:
36 = 14", 33 = 10 5/8"
- Soft-Close door hinges **not** available

Super Susan

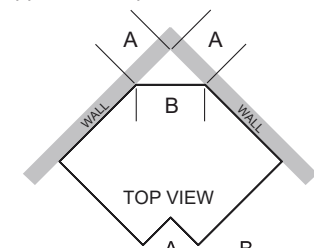
- 1 wood spin unit fixed to 3/4" adjustable shelf
- 1 wood spin unit fixed to floor

Weight Maximum per Tray:

BER33 = 64 lbs., BER36 = 83 lbs.

BER33
BER36**BER33-SS**
BER36-SS**BER Install Notes:**

To ensure proper door function use 3" filler for placement between the cabinet and any appliance deeper than 24".



BER/BSS33	9 7/8"	13 7/8"
BER/BSS36	11 5/8"	16 5/8"

Note:

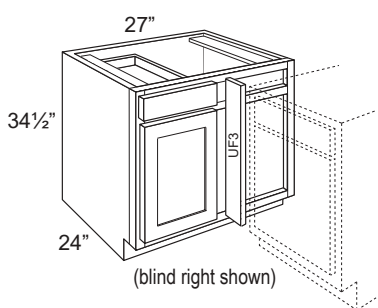
BER33 Raised Panel styles will have coordinating recessed (fat) center panel.

Caution:

BER36 requires 34 1/2" to fit through entryway, BER33 requires 33 1/2".

Blind Base

Corner



- 1 full depth adjustable shelf
- UF330 filler included
- BBC36/39 uses B12 door & drawer
- 6" middle stile (4 3/4" reveal for FOL door to operate properly)
- 9" wide opening (12" wide door)
- Blanking panel installed on non-door side

BBC36/39-L**BBC36/39-R** (shown above)**Blind Base Install Notes:**

	actual cabinet width	pull	min.	max.
BBC36/39	27"	A	37-3/4"	39-3/4"
BBC36/39	27"	B	13-3/4"	15-3/4"
BBC36/39	27"	C	10-3/4"	12-3/4"
BBC42/45	39"	A	43-3/4"	45-3/4"
BBC42/45	39"	B	19-3/4"	21-3/4"
BBC42/45	39"	C	4-3/4"	6-3/4"

Design Note

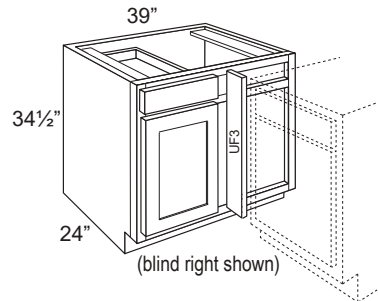
To ensure proper door function on corner cabinet, a 3" filler must be used for placement between the cabinet and any appliance deeper than 24"

Caution:

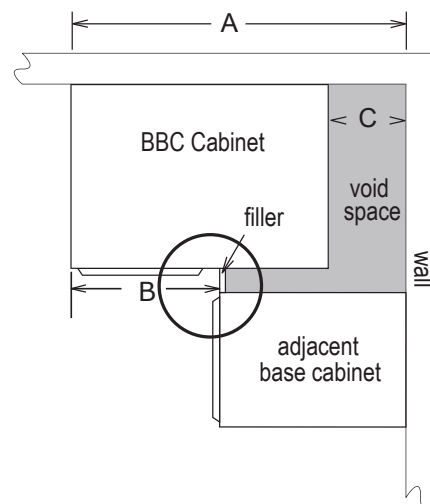
Minimum pull allows 7/8" clearance for decorative hardware for adjacent base cabinets. (Inset is 3 1/2")

Blind Base

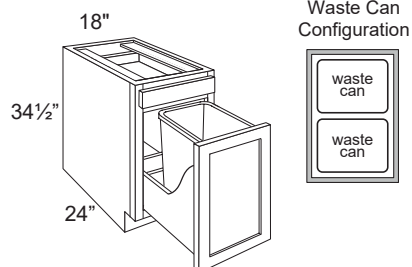
Corner



- 1 full depth adjustable shelf
- UF330 filler included
- BBC42/45 uses B18 door & drawer
- 6" middle stile (4 3/4" reveal for FOL door to operate properly)
- 15" wide opening (18" wide door)
- Blanking panel installed on non-door side

BBC42/45-L**BBC42/45-R** (shown above)**Base Waste Basket**

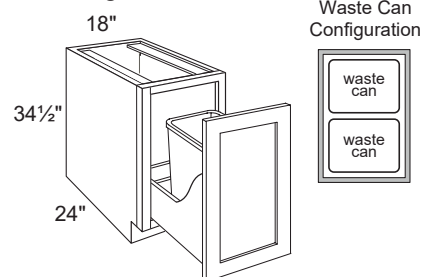
Standard Base



- One standard top drawer & No shelf
- Waste can(s) held in deep drawer box glides fixed to bottom of cabinet
- Soft-Close glides included for both drawers
- 35 qt. white polymer waste container(s)
- No shelf & holds 13 gallon trash bags

BWBT18**Base Waste Basket**

Full Height Base



- Waste can(s) held in deep drawer box glides fixed to bottom of cabinet
- Soft-Close glides included for both drawers
- 35 qt. white polymer waste container(s)
- No shelf & holds 13 gallon trash bags

BWBT18-FH

Tall Cabinets

Tall Construction

Design Notes:

Standard Tall cabinet box depth is 24" unless otherwise stated. This depth does not include the thickness of the doors, drawer fronts, and bumpers.

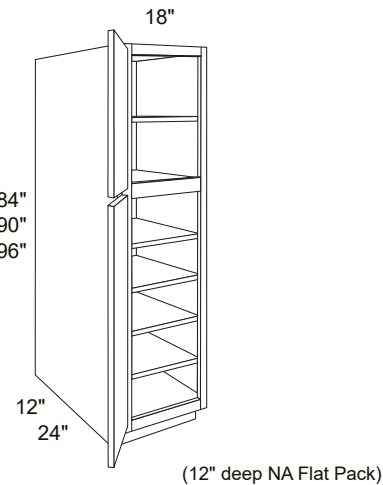
Standard cabinet construction includes a natural, unfinished plywood side unless otherwise stated. Matching finished wall end panles (skins) are available for field installation (see accessories).

Tall Cabinet Construction Legend:

Cabinet Nomenclature				
U	15	84	12	R
cabinet type	width	height	depth	hinge

Utility Cabinet

84", 90" & 96" high, 2 doors

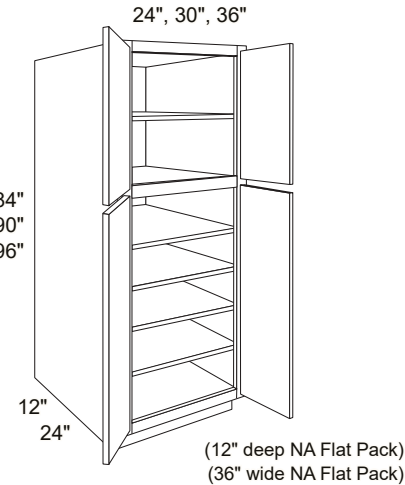


- 5 full depth adjustable shelves

U188424 U188412
U189024 U189012
U189624 U189612

Utility Cabinet

84", 90" & 96" high, 4 doors



- 5 full depth adjustable shelves,
- BUTT door cabinet

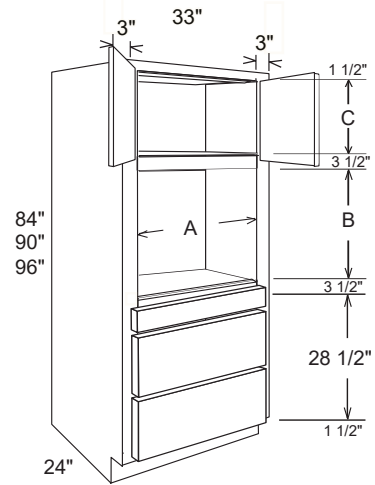
U248424 U248412
U249024 U249012
U249624 U249612

U308424 U308412
U309024 U309012
U309624 U309612

U368424 U368412
U369024 U369012
U369624 U369612

Oven Cabinet, Single

84", 90", 96" high



- No shelf
- Outside cabinet stiles (3" wide) provide 1 3/4" face frame reveal
- BUTT door cabinet

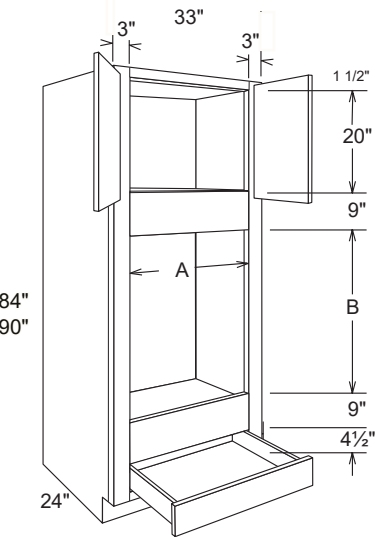
OVS3384 OVS3390 OVS3396	Door and Opening Dims		
	Cabinet Height	Opening Height - C	Door Height
	84"	18 1/2"	20"
	90"	24 1/2"	26"
	93"	27 1/2"	29"
	96"	30 1/2"	32"

Cut Out Dimensions

A Actual	A Max	B Actual	B Max*
27"	31"	24"	26 1/2"

Oven Drawer Cabinet

84", 90" high



- No shelf
- Outside cabinet stiles (3" wide) provide 1 3/4" face frame reveal
- BUTT door cabinet

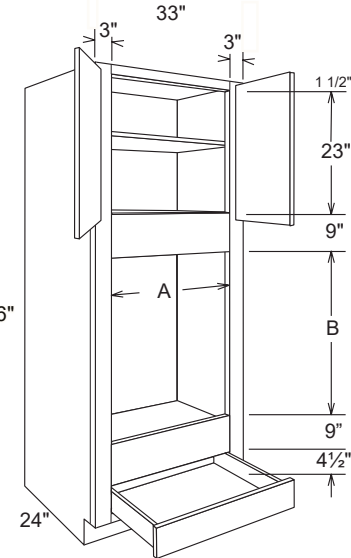
OVD3384
OVD3390

Cut Out Dimensions

A Actual	A Max	B Actual	B Max*
27"	31"	40"	52"

Oven Drawer Cabinet

96" high



- 1 full depth adjustable upper shelves
- Outside cabinet stiles (3" wide) provide 1 3/4" face frame reveal
- BUTT door cabinet

OVD3396

Vanity Cabinets

Vanity Construction

Design Notes:

Standard vanity cabinet box depth is 21" unless otherwise stated. This depth does not include the thickness of the doors, drawer fronts, and bumpers.

Standard cabinet construction includes a natural, unfinished plywood side unless otherwise stated. Matching finished wall end panles (skins) are available for field installation (see accessories).

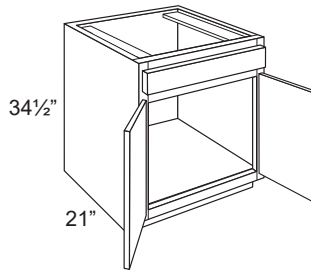
Vanity Cabinet Construction Legend:

Cabinet Nomenclature		
V	18	L
cabinet type	width	hinge

Vanity Sink Base

34½" high, 2 doors

24", 27", 30", 33", 36"

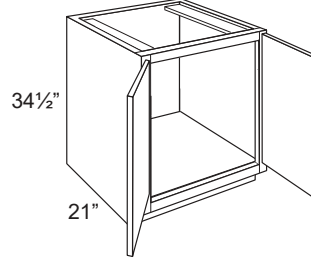


- No shelf or drawer box
- Drawer front removable from frame
- BUTT door cabinet

VSB24**VSB27****VSB30****VSB33****VSB36****Vanity Sink Base Full Height**

34½" high, 2 doors

24", 27", 30", 33", 36"



- No shelf
- No drawer front
- BUTT door cabinet

VSB24-FH**VSB27-FH****VSB30-FH****VSB33-FH****VSB36-FH****Vanity Base Cabinet**

12", 15"

34½"

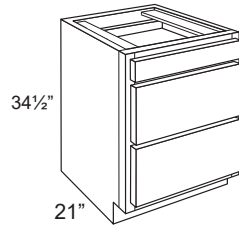
21"

- 1 standard drawer box
- No shelf

VB12**VB15****Vanity Drawer Base Cabinet**

34½" high, 3 drawers

12", 15", 18"

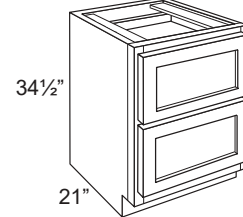


- 1 standard drawer
- 2 deep drawer

VDB12**VDB15****VDB18****Vanity Drawer Base Cabinet**

34½" high, 2 deep drawers

15"



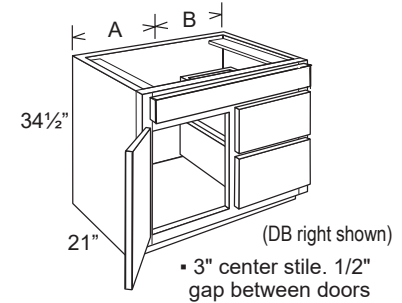
(NA Flat Pack)

- 2 deep drawer box
- 5 piece drawer fronts

VDB15-2**Vanity Combo Cabinet**

34½" high, sink base/drawer base

30", 36"



(DB right shown)

- 3" center stile. 1/2" gap between doors

- 2 deep drawer
- Top drawer front removable

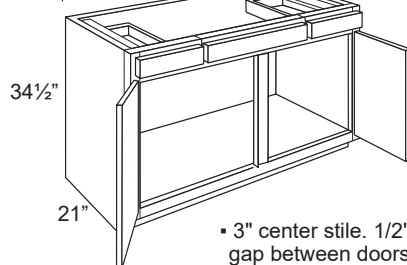
		A	B
VCD30-L	(1 door)	12"	18"
VCD30-R	(1 door)	18"	12"
VCD36-L	(2 doors)	12"	24"
VCD36-R	(2 doors)	24"	12"

Vanity Combo Cabinet

34½" high, 1 sink, 2 drawers

42"

11" 20" 11"



- 3" center stile. 1/2" gap between doors

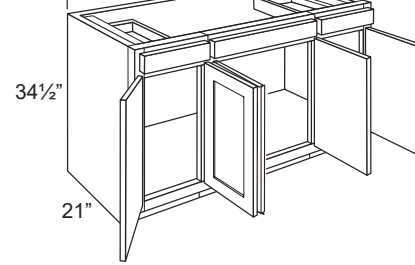
- 2 standard drawer boxes
- Sink drawer front removable

VSBD42**Vanity Combo Cabinet**

34½" high, 1 sink, 2 drawers

48"

12" 24" 12"

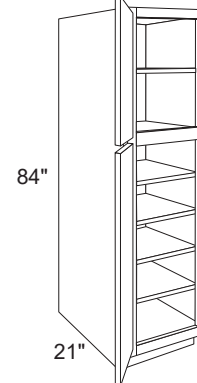


- 2 standard drawer boxes
- Sink drawer front removable

VSBD48**Vanity Linen Cabinet**

21" deep, 2 doors

18"



(NA Flat Pack)

- 5 full depth adjustable shelves

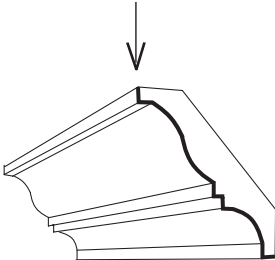
VLC188421

Accessories & Parts

Moldings, Fillers, Panels & Decorative Accents

Design Notes:
All accessories are available in all finish colors unless noted

Accessories Finish Legend:
The **bold line** in the illustrations represent the finished face/edge/profile of the product.

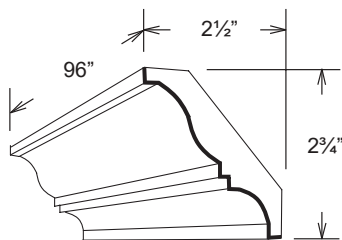


Accessory Nomenclature

UF	3	30
product acronym	width	height

Crown Molding

Ceiling Crown

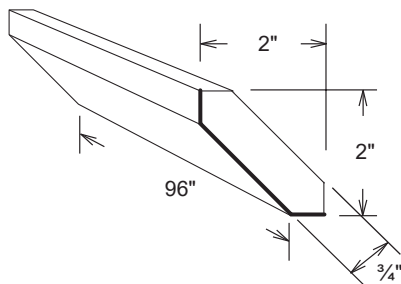


- Solid wood
- 96" in length
- Bold line finished

CCM8

Crown Molding

Angle Crown

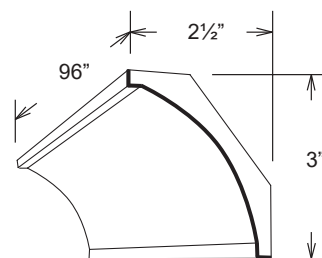


- Solid wood
- 96" in length
- Bold line finished

ACM8

Crown Molding

Cove Crown

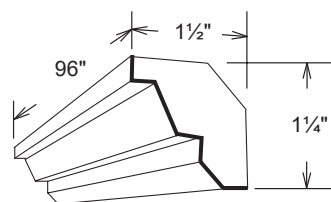


- Solid wood
- 96" in length
- Bold line finished

CVM8

Crown Molding

Soft Crown

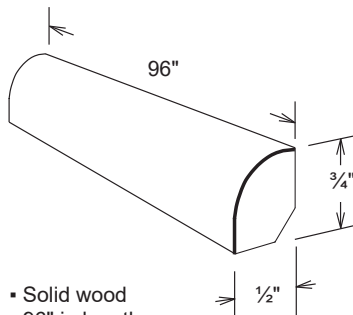


- Solid wood
- 96" in length
- Bold line finished

SCM8

Base Shoe

Molding

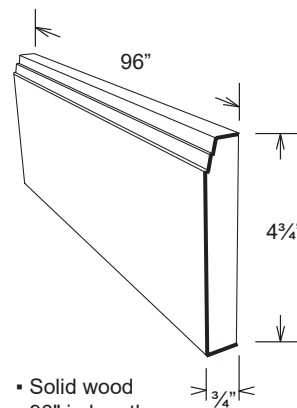


- Solid wood
- 96" in length
- Bold line finished

SHM8

Decorative Molding

Ogee Pilaster

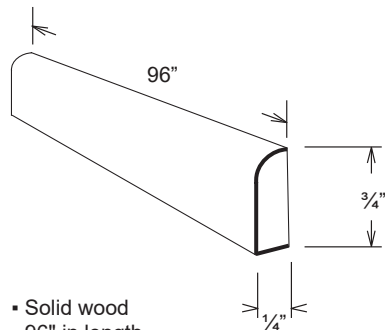


- Solid wood
- 96" in length
- Bold line finished

OGP8

Scribe

Molding

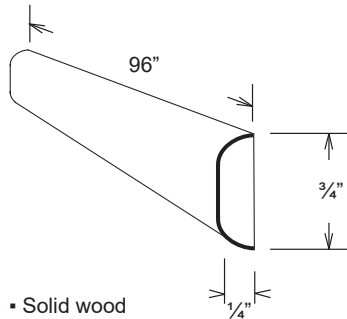


- Solid wood
- 96" in length
- Bold line finished

SM8

Batten

Molding

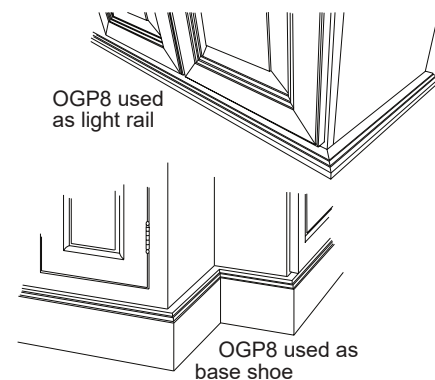


- Solid wood
- 96" in length
- Bold line finished

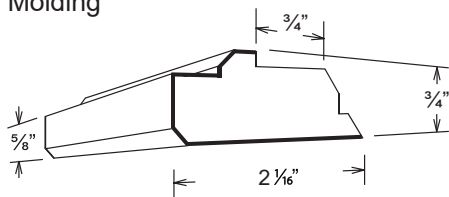
BM8

Design Note:

OGP8 can be used for trim along base cabinets for a furniture look. OGP8 can also be used as valance, light rail or top molding application.



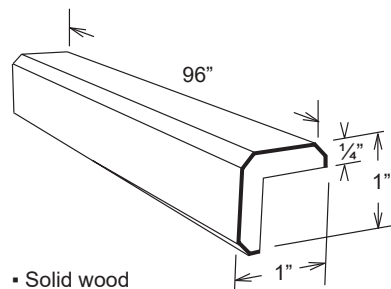
Shaker Lightrail Molding



- Solid wood
- 96" in length
- Bold line finished

SHLR

Outside Corner Molding

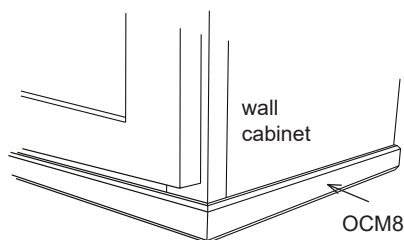


- Solid wood
- 96" in length
- Bold line finished

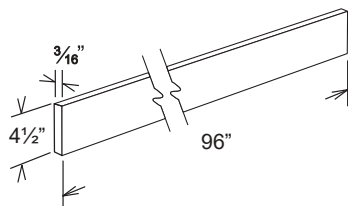
OCM8

Design Note:

Use as OCM8 for a light rail application.



Base Toe Kick Panel

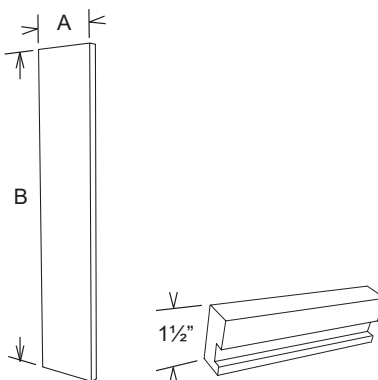


- 3/16" nominal panel veneered engineered core
- Finished 1 side
- Toe Kick (TKCAP) available

BTk8

January 2025

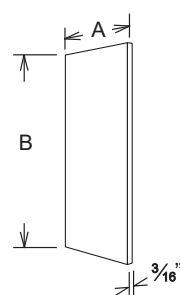
Fillers Universal



- 3/4" Solid wood
- Finished 3 sides (front & sides)
- UF1.5 fillers have 1/2" dado on back side

	A	B
UF1.596	1 1/2"	96"
UF330	3"	30"
UF336	3"	36"
UF342	3"	42"
UF396	3"	96"
UF642	6"	42"
UF696	6"	96"

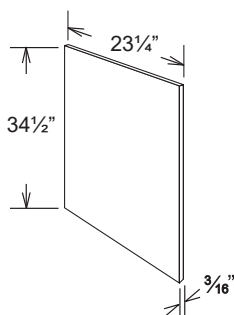
Wall End Panel Finished End Skin



- 3/16" nominal panel veneered engineered core
- Finished 1 side

	A	B
WEP1230	11 1/4"	30"
WEP1236	11 1/4"	36"
WEP1242	11 1/4"	42"
WEP1542	14 1/4"	42"

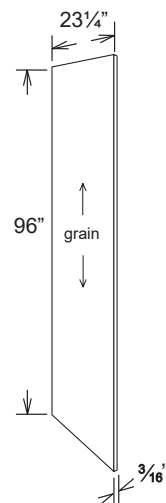
Base End Panel Finished End Skin



- 3/16" nominal panel veneered engineered core
- Finished 1 side
- **NOT** notched for toekick

BEFP

Tall End Panel Finished End Skin

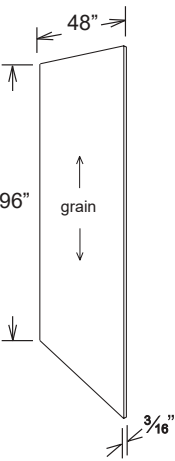


- 3/16" nominal panel veneered engineered core
- Finished 1 side
- **NOT** notched for toekick

TEFP

Finished Panel

Skin

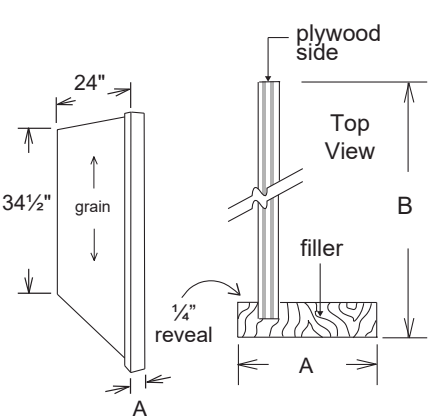


- 3/16" nominal panel veneered engineered core
- Finished 1 side

FP4896

Base End Panel

1/2" Finished End Panel

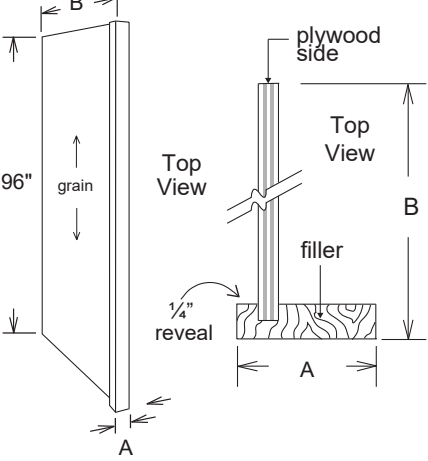


- 1/2" plywood return panel
- 3/4" solid hardwood, trimmable front filler
- Matching finished side
- Interior is melamine faux maple
- No toe kick notch
- Invert for left/right installation

24" Depth	A	B
BEP1.5	1 1/2"	24"

Refrigerator End Panel

1/2" Finished End Panel

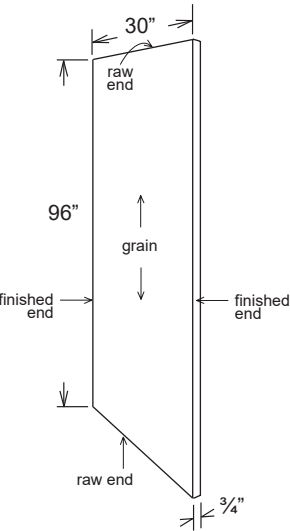


- 1/2" plywood return panel
- 3/4" solid hardwood, trimmable front filler
- Matching finished side
- Interior is melamine faux maple
- No toe kick notch
- Invert for left/right installation

24" Depth	A	B
REP1.596	1 1/2"	24"

Deep Tall End Panel

3/4" Engineered Wood Panel

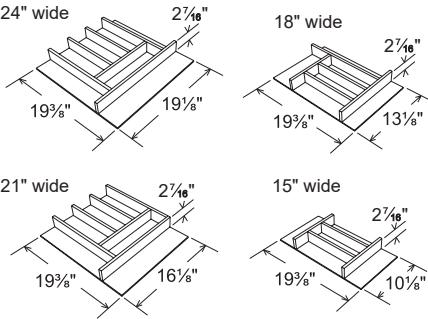


- 3/4" nominal panel veneered engineered core
- Both sides finished
- Edge banded on both long sides
- Top & bottom edges are raw/unfinished

DTEP3096

Drawer Insert Kit

Cutlery Tray Divider Insert

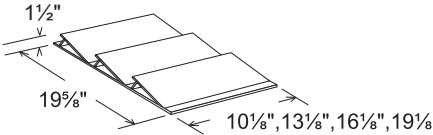


- Dividers 1/2" solid hardwood
- 1/4" plywood base with natural birch finish
- Shipped uninstalled
- Sized to fit standard depth (24") cabinet

CTK15
CTK18
CTK21
CTK24

Drawer Insert Kit

Spice Drawer Insert

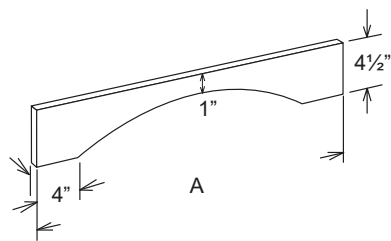


- Solid hardwood & plywood in natural finish
- Accommodates most spice containers (not included)
- Shipped uninstalled
- Sized to fit standard depth (24") cabinet

SDK15
SDK18
SDK21
SDK24

Shaker Valance

Decorative Accent

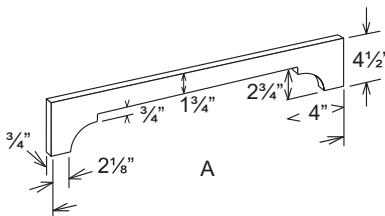


- Solid wood
- 4 sides finished, end cut raw

	A Maximum Trim (each end)
VSH36	2"
VSH48	2"

Crown Valance

Decorative Accent

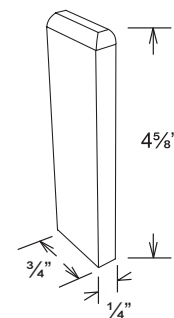


- Solid wood
- 4 sides finished, end cut raw

	A Maximum Trim (each end)
VC36	1"
VC48	1"

Toe Kick Cap

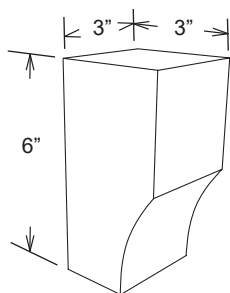
Trim Accent



- 1/4" Solid wood
- Trim piece used to apply over raw cut edge of BTK8

TKCAP**Tapered Leg**

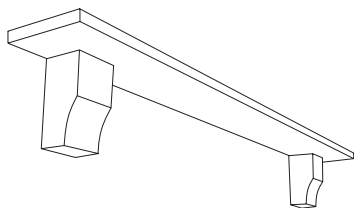
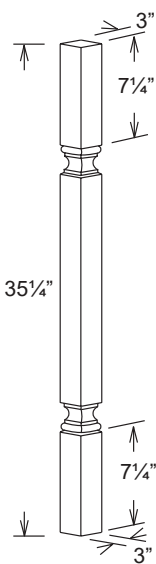
Decorative Accent



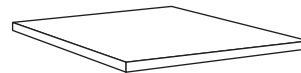
- Solid wood

TPL**Design Note:**

Use Tapered Leg or corbels for wall mounts & for shelving with FS7212 or UF6 to create open shelf.

**Post Square**
Post Split Square**PS336**

- Solid wood
- Field trimmable

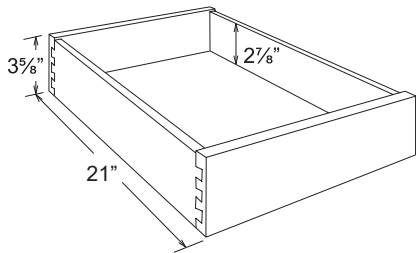
Shelves

- 3/4" thick plywood
- Edge banded front edge
- Durable and easy to clean melamine on top and bottom
- Matching edge style profiles
- 12" deep receive shelf rests
- 24" deep receive shelf clips
- Only standard sizes listed below

12" Deep	24" Deep
SH-912	SH-924
SH-1212	SH-1224
SH-1512	SH-1524
SH-1812	SH-1824
SH-2112	SH-2124
SH-2412	SH-2424
SH-2712	SH-2724
SH-3012	SH-3024
SH-3312	SH-3324
SH-3612	SH-3624
SH-4212	SH-4224

Corner WallSH-CW24
SH-CW27**Base Easy Reach**SH-BER33
SH-BER36

Roll-Out Tray (ROT)
Drawer Box



- 5/8" solid hardwood, dovetail joinery
- 1/4" fully captured plywood bottom
- Includes ROT, glides, back panel clips,
- Field installation required

ROT15-Overlay
ROT18-Overlay
ROT21-Overlay
ROT24-Overlay
ROT27-Overlay
ROT30-Overlay
ROT33-Overlay
ROT36-Overlay

Roll-Out Tray (ROT)
Install Kit

Base Cabinet

Pilaster System Kit

ROT-Overlay-Install-Kit-Base

Roll-Out Tray (ROT)
Install Kit

Tall Cabinet

Pilaster System Kit

ROT-Overlay-Install-Kit-Tall



Price List

Note:

Pricing discrepancies, errors and omissions may occur between this guide, design software and online pricing program. Please consult with Customer Service with any questions for final determination of price. HomeMark Cabinets reserves the right to change pricing without notification.

SKU	Olmsted Assembled	Madison Assembled	Olmsted Flat Pack	Madison Flat Pack
WALL CABINETS				
W3012	282	310	207	235
W3312	327	359	252	284
W3612	345	380	270	305
W3015	335	369	260	294
W3315	353	389	278	314
W3615	371	408	296	333
W918	284	329	NA	NA
W1218	303	351	228	276
W1518	319	369	244	294
W1818	335	386	260	311
W2118	360	415	285	340
W2418	401	462	326	387
W2718	420	483	345	408
W3018	362	398	287	323
W3318	377	414	302	339
W3618	397	437	322	362
W3021	399	439	324	364
W3621	438	482	363	407
W3024	431	475	356	400
W3324	445	489	370	414
W3624	471	518	396	443
W930	226	249	151	174
W1230	247	272	172	197
W1530	272	299	197	224
W1830	296	326	221	251
W2130	315	346	240	271
W2430	391	431	316	356
W2730	446	490	371	415
W3030	477	525	402	450
W3330	496	545	421	470
W3630	521	573	446	498
W4230	568	626	493	551
W936	290	319	215	244
W1236	323	355	248	280
W1536	364	401	289	326
W1836	396	436	321	361
W2136	429	471	354	396
W2436	523	576	448	501
W2736	629	692	554	617
W3036	669	737	594	662
W3336	705	776	630	701
W3636	740	814	665	739
W4236	817	901	742	826
W942	307	338	232	263
W1242	340	374	265	299
W1542	379	417	304	342
W1842	409	450	334	375
W2142	448	493	373	418
W2442	541	595	466	520
W2742	645	709	570	634
W3042	683	751	608	676
W3342	723	795	648	720

SKU	Olmsted Assembled	Madison Assembled	Olmsted Flat Pack	Madison Flat Pack
W3642	759	834	684	759
W4242	843	929	768	854
W301815	477	513	NA	NA
W361815	512	552	NA	NA
W302415	546	590	NA	NA
W362415	586	633	NA	NA
W93015	341	364	NA	NA
W93615	405	434	NA	NA
W94215	422	453	NA	NA
W123015	362	387	NA	NA
W123615	438	470	NA	NA
W124215	455	489	NA	NA
W153015	387	414	NA	NA
W153615	479	516	NA	NA
W154215	494	532	NA	NA
W183015	411	441	NA	NA
W183615	511	551	NA	NA
W184215	524	565	NA	NA
W213015	430	461	NA	NA
W213615	544	586	NA	NA
W214215	563	608	NA	NA
W243015	506	546	NA	NA
W243615	638	691	NA	NA
W244215	656	710	NA	NA
W273015	561	605	NA	NA
W273615	744	807	NA	NA
W274215	760	824	NA	NA
W303015	592	640	NA	NA
W303615	784	852	NA	NA
W304215	798	866	NA	NA
W333015	611	660	NA	NA
W333615	820	891	NA	NA
W334215	838	910	NA	NA
W363015	636	688	NA	NA
W363615	855	929	NA	NA
W364215	874	949	NA	NA
WR331224	394	433	319	358
WR361224	412	453	337	378
WR361524	424	466	349	391
WR331824	430	473	355	398
WR361824	452	497	377	422
WR332424	516	567	441	492
WR362424	537	590	462	515
WEA1230	387	NA	312	NA
WEA1236	429	NA	354	NA
WEA1242	491	NA	416	NA
FWD1506	312	345	237	270
FWD1806	329	369	254	294
FWD2106	352	402	277	327
FWD2406	369	425	294	350
WAC2418	360	396	285	321
WAC2430	475	522	400	447
WAC2436	595	655	520	580

SKU	Olmsted Assembled	Madison Assembled	Olmsted Flat Pack	Madison Flat Pack
WAC2442	601	661	526	586
WAC2736	756	832	681	757
WAC2742	764	840	689	765
WBC27/3030-L	424	467	349	392
WBC27/3030-R	424	467	349	392
WBC36/3930-L	454	500	379	588
WBC36/3930-R	454	500	379	588
WBC27/3036-L	549	605	474	530
WBC27/3036-R	549	605	474	530
WBC36/3936-L	604	665	529	782
WBC36/3936-R	604	665	529	590
WBC27/3042-L	566	624	491	549
WBC27/3042-R	566	624	491	549
WBC36/3942-L	623	686	548	611
WBC36/3942-R	623	686	548	611
BASE CABINETS				
B12	386	403	311	328
B15	425	445	350	370
B18	466	488	391	413
B21	522	545	447	470
B24	568	595	493	520
B27	611	639	536	564
B30	653	684	578	609
B33	697	729	622	654
B36	740	775	665	700
B39	996	1040	921	965
B42	981	1027	906	952
B12-RD21	501	518	NA	NA
B15-RD21	540	560	NA	NA
B18-RD21	581	603	NA	NA
B21-RD21	637	660	NA	NA
B24-RD21	683	710	NA	NA
B27-RD21	726	754	NA	NA
B30-RD21	768	799	NA	NA
B33-RD21	812	844	NA	NA
B36-RD21	855	890	NA	NA
B39-RD21	1111	1155	NA	NA
B42-RD21	1096	1142	NA	NA
B9-FH	304	319	229	244
B12-FH	340	357	265	282
B15-FH	353	370	278	295
B18-FH	367	385	292	310
B21-FH	380	399	305	324
B24-FH	425	446	350	371
B27-FH	461	484	386	409
B30-FH	499	524	424	449
B33-FH	686	721	611	646
B36-FH	732	769	657	694
B39-FH	848	883	773	808
B42-FH	823	860	748	785
B12-FH-RD21	455	472	NA	NA
B15-FH-RD21	468	485	NA	NA
B18-FH-RD21	482	500	NA	NA

SKU	Olmsted Assembled	Madison Assembled	Olmsted Flat Pack	Madison Flat Pack
B21-FH-RD21	495	514	NA	NA
B24-FH-RD21	540	561	NA	NA
B27-FH-RD21	576	599	NA	NA
B30-FH-RD21	614	639	NA	NA
B33-FH-RD21	801	836	NA	NA
B36-FH-RD21	847	884	NA	NA
B39-FH-RD21	963	998	NA	NA
B42-FH-RD21	938	975	NA	NA
DB12	787	733	712	658
DB15	803	750	728	675
DB18	864	816	789	741
DB21	925	881	850	806
DB24	987	948	912	873
DB27	1048	1013	973	938
DB30	1111	1081	1036	1006
DB33	1222	1188	1147	1113
DB36	1332	1296	1257	1221
DB15-2	595	670	520	595
DB30-2	857	964	782	889
DB33-2	911	1025	836	950
DB36-2	964	1085	889	1010
SB30	550	573	475	498
SB33	585	610	510	535
SB36	621	647	546	572
SB42	773	807	698	732
SB30-FH	545	570	470	495
SB33-FH	582	608	NA	NA
SB36-FH	619	647	NA	NA
SB42-FH	700	731	NA	NA
SBA36	683	712	608	637
SBA39	724	754	649	679
BM24-BI	653	684	578	609
BM30-BI	751	787	676	712
BSPO9	702	737	702	737
BWBT18	924	968	849	893
BWBT18-FH	924	968	849	893
BER33	719	755	644	680
BER36	747	784	672	709
BER33-SS	1228	1290	1153	1215
BER36-SS	1275	1339	1200	1264
BBC36/39-R	602	658	527	583
BBC36/39-L	602	658	527	583
BBC42/45-R	646	707	571	632
BBC42/45-L	646	707	571	632
TALL CABINETS				
U188412	1299	1428	NA	NA
U248412	1485	1634	1410	1559
U308412	2124	2336	NA	NA
U368412	2340	2573	NA	NA
U188424	1039	1143	964	1068
U248424	1188	1307	1113	1232
U308424	1699	1869	1624	1794
U368424	1871	2058	1796	1983

SKU	Olmsted Assembled	Madison Assembled	Olmsted Flat Pack	Madison Flat Pack
U189012	1355	1490	NA	NA
U249012	1552	1707	1477	1632
U309012	2106	2316	NA	NA
U369012	2669	2936	NA	NA
U189024	1083	1191	1008	1116
U249024	1241	1366	1166	1291
U309024	1684	1853	1609	1778
U369024	2136	2349	2061	2274
U189612	1384	1522	NA	NA
U249612	1621	1784	1546	1709
U309612	2154	2370	NA	NA
U369612	2732	3005	NA	NA
U189624	1107	1218	1032	1143
U249624	1297	1427	1222	1352
U309624	1723	1896	1648	1821
U369624	2186	2404	2111	2329
OVS3384	1437	1581	1362	1506
OVS3390	1582	1740	1507	1665
OVS3396	1741	1916	1666	1841
OVD3384	1198	1318	1123	1243
OVD3390	1319	1451	1244	1376
OVD3396	1451	1597	1376	1522
VANITY CABINETS				
VSB24	455	497	380	422
VSB27	539	589	464	514
VSB30	566	618	491	543
VSB33	592	647	517	572
VSB36	617	675	542	600
VSB24-FH	362	398	287	323
VSB27-FH	439	482	364	407
VSB30-FH	477	525	402	450
VSB33-FH	514	565	439	490
VSB36-FH	551	607	476	532
VB12	379	413	304	338
VB15	418	437	343	362
VDB12	666	666	591	591
VDB15	728	728	653	653
VDB18	788	788	713	713
VDB15-2	613	657	538	582
VCD30-L	777	972	702	897
VCD30-R	777	972	702	897
VCD36-L	876	1082	801	1007
VCD36-R	876	1082	801	1007
VSBD42	908	1100	833	1025
VSBD48	977	1176	902	1101
VLC188421	948	1043	873	968
MOULDING				
BTK8	35	35	35	35
OGP8	291	291	291	291
SHM8	57	57	57	57
ACM8	195	195	195	195
SCM8	97	97	97	97
CCM8	172	172	172	172

SKU	Olmsted Assembled	Madison Assembled	Olmsted Flat Pack	Madison Flat Pack
CVM8	204	204	204	204
SHLR	200	200	200	200
OCM8	63	63	63	63
SM8	55	55	55	55
BM8	51	51	51	51
TKCAP	7	7	7	7
FILLERS				
UF1.596	76	76	76	76
UF330	38	38	38	38
UF336	47	47	47	47
UF342	52	52	52	52
UF396	147	147	147	147
UF642	98	98	98	98
UF696	291	291	291	291
PANELS				
WEP1230	34	34	34	34
WEP1236	39	39	39	39
WEP1242	48	48	48	48
WEP1542	54	54	54	54
BEFP	69	69	69	69
TEFP	230	230	230	230
FP4896	445	445	445	445
RETURN PANLES				
BEP1.5	204	204	204	204
REP1.596	559	559	559	559
DTEP3096	584	584	584	584
SUPPORTS & LEGS				
PS336	906	906	906	906
TPL	89	89	89	89
VALANCES				
VSH36	120	120	120	120
VSH48	136	136	136	136
VC36	185	185	185	185
VC48	206	206	206	206
BASE CABINET INSERTS				
CTK15	131	131	131	131
CTK18	155	155	155	155
CTK21	172	172	172	172
CTK24	191	191	191	191
SDK15	100	100	100	100
SDK18	100	100	100	100
SDK21	100	100	100	100
SDK24	100	100	100	100
ROLL OUT TRAYS				
ROT15-Overlay	157	157	157	157
ROT18-Overlay	159	159	159	159
ROT21-Overlay	168	168	168	168
ROT24-Overlay	170	170	170	170
ROT27-Overlay	179	179	179	179
ROT30-Overlay	187	187	187	187
ROT33-Overlay	192	192	192	192
ROT36-Overlay	195	195	195	195
ROT-Overlay-Install-Kit-Base	345	345	345	345

SKU	Olmsted Assembled	Madison Assembled	Olmsted Flat Pack	Madison Flat Pack
ROT-Overlay-Install-Kit-Tall	690	690	690	690
SHELVES				
FLS24	422	509	422	509
FLS30	436	543	436	543
FLS36	462	603	462	603
FLS42	474	619	474	619
SH-912	38	38	38	38
SH-1212	39	39	39	39
SH-1512	40	40	40	40
SH-1812	41	41	41	41
SH-2112	42	42	42	42
SH-2412	43	43	43	43
SH-2712	44	44	44	44
SH-3012	45	45	45	45
SH-3312	46	46	46	46
SH-3612	47	47	47	47
SH-4212	49	49	49	49
SH-924	48	48	48	48
SH-1224	49	49	49	49
SH-1524	50	50	50	50
SH-1824	51	51	51	51
SH-2124	52	52	52	52
SH-2424	53	53	53	53
SH-2724	54	54	54	54
SH-3024	55	55	55	55
SH-3324	56	56	56	56
SH-3624	57	57	57	57
SH-4224	59	59	59	59
SH-CW24	61	61	61	61
SH-CW27	62	62	62	62
SH-BER33	74	74	74	74
SH-BER36	79	79	79	79

HomeMark Cabinets
 4747 Western Avenue
 Connersville, Indiana 47331
customerservice@homemarkcabinets.com
 (888) 350-9165

